



*The Leading Innovator in Concrete Grinding &
Polishing Technology*

DIAMOND TOOLING CATALOG 2011

www.diamaticusa.com

www.diamag.eu

(866) 295-5512



Welcome to Diamatic USA, you will find in the catalogue a range of standard tooling available in the market place today as well as a range of specialized tooling to reduce your costs, in some cases, steps, and products that product for long life and productivity improvements. Our specialized diamonds, Trojans, Transitionals, Transformers, and Hybrids are specifically designed for our high production, heavy equipment line. The Diamatic Platforms in the 600, 700, and 800 series produce more horsepower and torque to the concrete then other planetary machines in the market today. Thus Diamatic has matched the tooling to the machine to maximize your efforts on the job.

Diamag Magnetic Plates are available for all tooling options as well as screw on plates for those unwilling to commit to one manufacturer for tooling to allow you flexibility. Diamag is now available for Lavina, HTC, SASE and Innovatex equipment. www.diamag.com

Diamatic USA has the most extensive network of stocking distribution available in North America. Let one of our locations being opened in 2011 reduce your inventory costs, increase availability, and lesson the time involved in managing your consumables. With nearly 2M in diamond inventory in the USA and Canada we are certain we will have what you need, when you need it, and at a competitive price to support your business.

Those companies buying more than \$5000.00 per order of diamonds have special terms, pricing, and freight considerations, call a Diamatic Distributor or the Customer Service Center for details.

*With 144 stocking locations and 250 years of
concrete grinding and polishing experience,
Diamatic and our distribution network are the industry leaders.*



Choosing a Diamond:

80% of concrete can be ground and polished with medium bond diamonds. With the new technology available in our offering you can safely account for 90% of the surfaces you are working on the first time. There are hundreds, if not thousands, of concrete mix designs, so reducing the guess work and “voodoo” presented by diamond after market companies is our mission. For the slabs or stone work that require special tooling you will find them on our catalogue, whether it be soft, extra soft, medium, hard or extra hard, wet or dry, there is a diamond in the offering for you.

The easiest way to achieve success in diamond tooling is to remember the following:

- **Metal Bond Steps or the initial cutting and its success sets your job up for success or failure. Picking the right tooling to start is the most important item to get you off the job with the best results.**
- **Hard concrete means soft bond tooling is required. If you have a medium bond diamond not cutting fast enough or glazing over you need to move to soft bond diamond to increase production.**
- **Soft Concrete means Hard bond tooling is required, if you have a diamond wearing away too quickly you will need to move to a hard bond diamond to increase life and production.**
- **Medium Bonds usually will tell you the condition of the concrete and what to look for. Come to a Diamatic School in one of our 17 locations to get educated and reduce the stress of choosing a diamond while saving you money.**

Resin tooling is easier to work with so the few items you need to remember are:

The first resin step after grinding with metals in the polishing process needs to remove the larger scratches from the pervious tooling. This can be seen in the first 10 feet, if this is not happening after a 10 foot pass it will not happen and you need to jump down a grit or insert a hybrid diamond.

- **Hybrid tooling is now available to reduce steps**

Go to Ultraflor.com to see step by step processes to produce a floor and Download one of 25 specifications needed to meet your customers needs for polishing concrete and restoration.

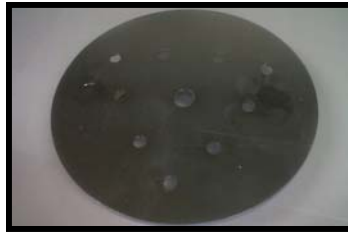
Finally, tooling costs are a big part of the job, but labor and production are greater. It is not as important to save \$2.00 per tool as it is to have a warranty, production, repeatability, and a place to go for support. Tooling companies, and there are many, produce under different sets of controls, it only takes one misplaced diamond grit to scratch a floor and cause a return to the job, failure, or an unhappy customer. Partner with a company that will support, stock, warranty, and provide the latest cutting edge technology. Don't load up on stock as tooling changes and advancement change constantly. In order for you to have long term success don't lock in with huge inventories and tie up your cash and limit your options, use our stocking partners, visit www.diamaticusa.com today!!!

At Diamatic we thank you for your consideration and patronage. We are 100% confident you will find our tooling cutting edge, competitive, productive, and available.

DIAMATIC USA!!!!

- Stephen Klugherz

SCREW ON PLATES FOR PLANETARY MACHINES



435 PART NUMBERS & DESCRIPTIONS

BG300212

ADAPTER PLATE (WINGS) - BMG-435

BG300213

ADAPTER 435 SP/POLISHING RESIN



**DIA-SASESCREW
REPLACEMENT
SCREWS**



535 PART NUMBERS & DESCRIPTIONS

PA-10949

580 RESIN DIAMOND ADAPTER PLATES

PA-10950

580 DIAMOND WING ADAPTER PLATES



735 & 780 PART NUMBERS & DESCRIPTIONS

PA-10935

735 DIAMOND WING ADAPTER PLATES

PA-10936

735 RESIN DIAMOND ADAPTER PLATES

RIGID PLATE SET UP

- For Heavy Grinding Concrete with 735, 780 and 835 machines



PART NUMBERS & DESCRIPTIONS		
BG11880 FORK QUANTITY 3	BE0204/BE0584 BOLT & SPRING WASHER QUANTITY 9	BG11879 BUFFER DISC QUANTITY 3
BG240190-1 240MM DIAMOND HOLDER COMPLETE QUANTITYT 3	BE0608 RETAINING RING QUANTITY 3	BE0030 BOLT QUANTITY 3
	BE0314 WASHER QUANTITY 6	

METAL BOND SINGLE SEGMENT

- For use with both Diamag and Screw on Plates
- Diamatic Planetary Machine: 435



PART NUMBERS & DESCRIPTIONS

DIA707320S 18/20 GRIT SINGLE SEGMENT DIAMOND WING SOFT	DIA707320 18/20 GRIT SINGLE SEGMENT DIAMOND WING MEDIUM	DIA707320H 18/20 GRIT SINGLE SEGMENT DIAMOND WING HARD
DIA707340S 30/40 GRIT SINGLE SEGMENT DIAMOND WING SOFT	DIA707340 30/40 GRIT SINGLE SEGMENT DIAMOND WING MEDIUM	DIA707340H 30/40 GRIT SINGLE SEGMENT DIAMOND WING HARD
DIA707380S 60/80 GRIT SINGLE SEGMENT DIAMOND WING SOFT	DIA707380 60/80 GRIT SINGLE SEGMENT DIAMOND WING MEDIUM	DIA707380H 60/80 GRIT SINGLE SEGMENT DIAMOND WING HARD
	DIA7073140 120/140 GRIT SINGLE SEGMENT DIAMOND WING MEDIUM	

METAL BOND DOUBLE SEGMENT

- For use with both Diamatic Machines: 535, 580, 635, 735, 780 & 835 units
- Initial grinding steps for polishing & preparation



PART NUMBERS & DESCRIPTIONS

DIA708320S 18/20 GRIT DOUBLE SEGMENT DIAMOND WING SOFT	DIA708320 18/20 GRIT DOUBLE SEGMENT DIAMOND WING MEDIUM	DIA708320H 18/20 GRIT DOUBLE SEGMENT DIAMOND WING HARD
DIA708340S 30/40 GRIT DOUBLE SEGMENT DIAMOND WING SOFT	DIA708340 30/40 GRIT DOUBLE SEGMENT DIAMOND WING MEDIUM	DIA708340H 30/40 GRIT DOUBLE SEGMENT DIAMOND WING HARD
DIA708380S 60/80 GRIT DOUBLE SEGMENT DIAMOND WING SOFT	DIA708380 60/80 GRIT DOUBLE SEGMENT DIAMOND WING MEDIUM	DIA708380H 60/80 GRIT DOUBLE SEGMENT DIAMOND WING HARD
DIA7083140S 120/140 GRIT DOUBLE SEGMENT DIAMOND WING SOFT	DIA7083140 120/140 GRIT DOUBLE SEGMENT DIAMOND WING MEDIUM	

ECO METAL DOUBLE SEGMENT



PART NUMBERS & DESCRIPTIONS

BG707331S 20/25 GRIT DOUBLE SEGMENT ECONOMY DIAMOND WING SOFT	BG707331 20/25 GRIT DOUBLE SEGMENT ECONOMY DIAMOND WING MEDIUM	BG707331H 20/25 GRIT DOUBLE SEGMENT ECONOMY DIAMOND WING HARD
BG707332S 30/40 GRIT DOUBLE SEGMENT ECONOMY DIAMOND WING SOFT	BG707332 30/40 GRIT DOUBLE SEGMENT ECONOMY DIAMOND WING MEDIUM	BG707332H 30/40 GRIT DOUBLE SEGMENT ECONOMY DIAMOND WING HARD
BG707333S 60/80 GRIT DOUBLE SEGMENT ECONOMY DIAMOND WING SOFT	BG707333 60/80 GRIT DOUBLE SEGMENT ECONOMY DIAMOND WING MEDIUM	BG707333H 60/80 GRIT DOUBLE SEGMENT ECONOMY DIAMOND WING HARD
	BG707334 120/140 GRIT DOUBLE SEGMENT ECONOMY DIAMOND WING MEDIUM	

METAL BOND TROJANS

- No square leading edge less uneven scratching on rough surfaces
- For use with both Diamatic Machines: 535, 580, 635, 735, 780 & 835 units



PART NUMBERS & DESCRIPTIONS

DIA709320S 18/20 GRIT TROJAN DIAMOND WING SOFT	DIA709320 18/20 GRIT TROJAN DIAMOND WING MEDIUM	DIA709320H 18/20 GRIT TROJAN DIAMOND WING HARD
DIA709340S 30/40 GRIT TROJAN DIAMOND WING SOFT	DIA709340 30/40 GRIT TROJAN DIAMOND WING MEDIUM	DIA709340H 30/40 GRIT TROJAN DIAMOND WING HARD
DIA709380S 60/80 GRIT TROJAN DIAMOND WING SOFT	DIA709380 60/80 GRIT TROJAN DIAMOND WING MEDIUM	DIA709380H 60/80 GRIT TROJAN DIAMOND WING HARD
DIA7093140S 120/140 GRIT TROJAN DIAMOND WING MEDIUM	DIA7093140 120/140 GRIT TROJAN DIAMOND WING MEDIUM	

POLYCRYSTALLINE DIAMONDS (PCD's)

- For use with both Diamatic Machines: 535, 580, 635, 735, 780 & 835 units as well as all competitive brands: Husqvarna, HTC, SASE, and Innovatec



PART NUMBERS & DESCRIPTIONS	
BG200999 QUARTER ROUND PCD DIAMOND WING RIGHT	BG200995L FULL ROUND PCD WING LEFT
BG200997 18/20 GRIT SPLIT SEGMENT DIAMOND WING PCD	BG200995 FULL ROUND PCD WING RIGHT



DIAMOND METAL BOND WINGS

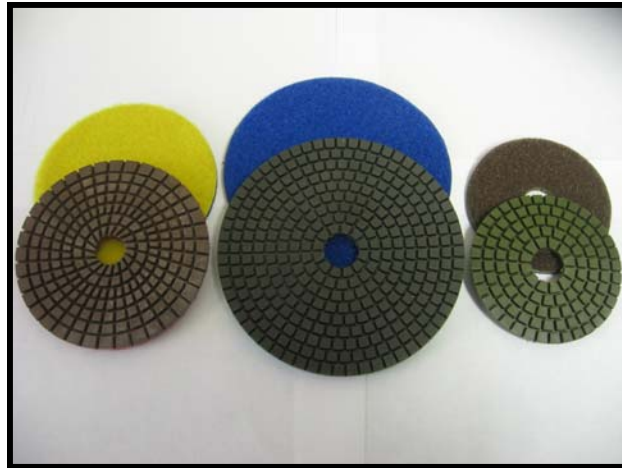
- ROUND SEGMENT



PART NUMBERS & DESCRIPTIONS	
DIA710380S DIAMOND WING DOUBLE ROUND 60/80GRIT SOFT BOND	DIA7103140S DIAMOND WING DOUBLE ROUND 120/140 GRIT SOFT BOND

HAND TOOL RESIN PADS

- For use with 3", 4", 5" Polishing Tools and Grinders
- Stone or Concrete
- Wet or Dry



PP-D3200 3" ECONOMY HAND TOOL RESIN PAD 200 GRIT	PP-D3300 3" ECONOMY HAND TOOL RESIN PAD 300 GRIT	PP-PD3500 3" ECONOMY HAND TOOL RESIN PAD 500 GRIT
PP-D31000 3" ECONOMY HAND TOOL RESIN PAD 1000 GRIT	PP-D32000 3" ECONOMY HAND TOOL RESIN PAD 2000 GRIT	PP-D33000 3" ECONOMY HAND TOOL RESIN PAD 3000 GRIT
PP-D4050 4" ECONOMY HAND TOOL RESIN PAD 50 GRIT	PP-D4080 4" ECONOMY HAND TOOL RESIN PAD 80 GRIT	PP-D4150 4" ECONOMY HAND TOOL RESIN PAD 150 GRIT
PP-D4300 4" ECONOMY HAND TOOL RESIN PAD 300 GRIT	PP-D4500 4" ECONOMY HAND TOOL RESIN PAD 500 GRIT	PP-D41000 4" ECONOMY HAND TOOL RESIN PAD 1000 GRIT
PP-D42000 4" ECONOMY HAND TOOL RESIN PAD 2000 GRIT	PP-D43000 4" ECONOMY HAND TOOL RESIN PAD 3000 GRIT	PP-D5050 5" ECONOMY HAND TOOL RESIN PAD 50 GRIT
PP-D5080 5" ECONOMY HAND TOOL RESIN PAD 80 GRIT	PP-D5100 5" ECONOMY HAND TOOL RESIN PAD 100 GRIT	PP-D5150 5" ECONOMY HAND TOOL RESIN PAD 150 GRIT
PP-D5200 5" ECONOMY HAND TOOL RESIN PAD 200 GRIT	PP-D5300 5" ECONOMY HAND TOOL RESIN PAD 300 GRIT	PP-D5400 5" ECONOMY HAND TOOL RESIN PAD 400 GRIT
PP-D5500 5" ECONOMY HAND TOOL RESIN PAD 500 GRIT	PP-D5800 5" ECONOMY HAND TOOL RESIN PAD 800 GRIT	PP-D51000 5" ECONOMY HAND TOOL RESIN PAD 1000 GRIT
PP-D51500 5" ECONOMY HAND TOOL RESIN PAD 1500 GRIT	PP-D52000 5" ECONOMY HAND TOOL RESIN PAD 2000 GRIT	PP-D53000 5" ECONOMY HAND TOOL RESIN PAD 3000 GRIT

TRADITIONAL RESIN DOTS

- For use with any planetary grinder on the market
(manufactured in Europe)

PART NUMBERS & DESCRIPTIONS		
		
BG200982 2.5" DRY POLISHING RESIN DOT BLACK 100 GRIT	BG200983 2.5" DRY POLISHING RESIN DOT BLUE 200 GRIT	BG200984 2.5" DRY POLISHING RESIN DOT RED 400 GRIT

PART NUMBERS & DESCRIPTIONS		
		
BG200985 2.5" DRY POLISHING RESIN DOT WHITE 800 GRIT	BG200986 2.5" DRY POLISHING RESIN DOT YELLOW 1500 GRIT	BG200987 2.5" DRY POLISHING RESIN DOT GREEN 3000 GRIT

SHROUD KITS & COUGR



PART NUMBERS & DESCRIPTIONS

05-65900

7" ECO SHROUD FULL

05-65903

7" ECO SHROUD CONVERTIBLE



PART NUMBERS & DESCRIPTIONS

05-10700C

**7" DIA
COUGR LITEX WHEEL
#16 GRIT**

05-10705C

**7" DIA
COUGR LITEX WHEEL
#10 GRIT**

05-10710C

**7" DIA
COUGR LITEX WHEEL
#24 GRIT**

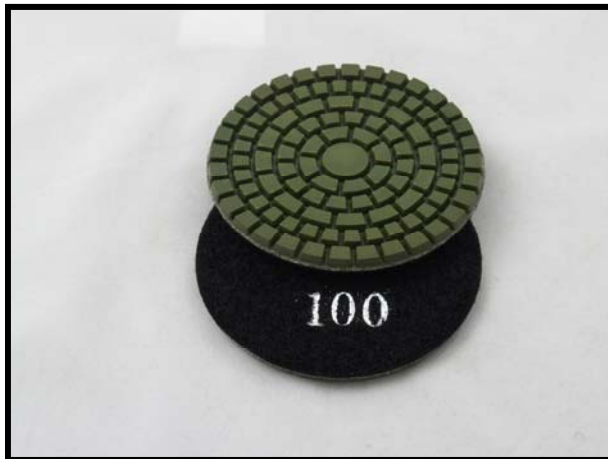
05-10720C

**7" DIA
COUGR LITEX WHEEL
#36 GRIT**

REFINE RESIN PADS

3mm Thick for Lite Machines &
Refine II 6mm Thick Heavy Machines

REFINE



REFINE II



PART NUMBERS & DESCRIPTIONS

DIAITS800100 100 GRIT 3MM BLACK 3"REFINE RESIN	DIAITS800200 200 GRIT 3MM BLUE 3"REFINE RESIN	DIAITS800400 400 GRIT 3MM RED 3"REFINE RESIN
DIAITS800100-2 100 GRIT 6MM 3"REFINE RESIN	DIAITS800200-2 200 GRIT 6MM 3"REFINE RESIN	DIAITS800400-2 400 GRIT 6MM 3"REFINE RESIN
DIAITS800800 800 GRIT 3MM WHITE 3"REFINE RESIN	DIAITS8001500 1500 GRIT 3MM YELLOW 3"REFINE RESIN	DIAITS8003000 3000 GRIT 3MM GREEN 3"REFINE RESIN
DIAITS800800-2 800 GRIT 6MM 3"REFINE RESIN	DIAITS8001500-2 1500 GRIT 6MM 3"REFINE RESIN	DIAITS8003000-2 3000 GRIT 6MM 3"REFINE RESIN

RESIN PUCKS

- For use with both Diamatic Machines: 535, 580, 635, 735, 780 & 835 units



PART NUMBERS & DESCRIPTIONS		
PP-PD3050 3" RESIN PUCK 50 GRIT	PP-PD3100 3" RESIN PUCK 100 GRIT	PP-PD3200 3" RESIN PUCK 200 GRIT
PP-PD3400 3" RESIN PUCK 400 GRIT	PP-PD3800 3" RESIN PUCK 800 GRIT	PP-PD31500 3" RESIN PUCK 1500 GRIT
PP-PD33000 3" RESIN PUCK 3000 GRIT	PP-PD3BUFF 3" RESIN PUCK BUFF GRIT	



FLEXRES FLOOR RESIN PADS

COPPER & NON COPPER

- PATENT PENDING FLEXIBLE RUBBER BACKED WITH VELCRO DIAMONDS FOR :535, 580, 635, 735, 780 & 835 PLANETARY MACHINES



PART NUMBERS & DESCRIPTIONS		
DIA3FLEXCOP50 50 GRIT 3" FLEXRES COPPER HYBRID RUBBER BACKED	DIA3FLEXCOP100 100 GRIT 3" FLEXRES COPPER HYBRID RUBBER BACKED	DIA3FLEXCOP200 200 GRIT 3" FLEXRES COPPER HYBRID RUBBER BACKED
DIA3FLEXCOP5400 400 GRIT 3" FLEXRES COPPER HYBRID RUBBER BACKED	DIA3FLEXCOP800 800 GRIT 3" FLEXRES COPPER HYBRID RUBBER BACKED	DIA3FLEXCOP1500 1500 GRIT 3" FLEXRES COPPER HYBRID RUBBER BACKED
DIA3FLEXCOP3000 3000 GRIT 3" FLEXRES COPPER HYBRID RUBBER BACKED		DIA3HYBRID50 50 GRIT 3" FLEXRES HYBRID RUBBER BACKED
DIA3HYBRID100 100 GRIT 3" FLEXRES HYBRID RUBBER BACKED	DIA3HYBRID200 200 GRIT 3" FLEXRES HYBRID RUBBER BACKED	DIA3HYBRID400 400 GRIT 3" FLEXRES HYBRID RUBBER BACKED
DIA3HYBRID800 800 GRIT 3" FLEXRES HYBRID RUBBER BACKED	DIA3HYBRID1500 1500 GRIT 3" FLEXRES HYBRID RUBBER BACKED	DIA3HYBRID3000 3000 GRIT 3" FLEXRES HYBRID RUBBER BACKED

MOST PRODUCTIVE RESIN ON THE MARKET TODAY!

SEMI-METALS & TRANSFORMERS

- High Life Aggressive Cutting For 535, 580, 635, 735, 780 & 835 units



METAL BOND STEPS & PREPARATION

SEMI –METALS PART NUMBERS & DESCRIPTIONS		
DIA3SEMI50 50 GRIT 3" SEMI METAL	DIA3SEMI100 100 GRIT 3" SEMI METAL	DIA3SEMI200 200 GRIT 3" SEMI METAL

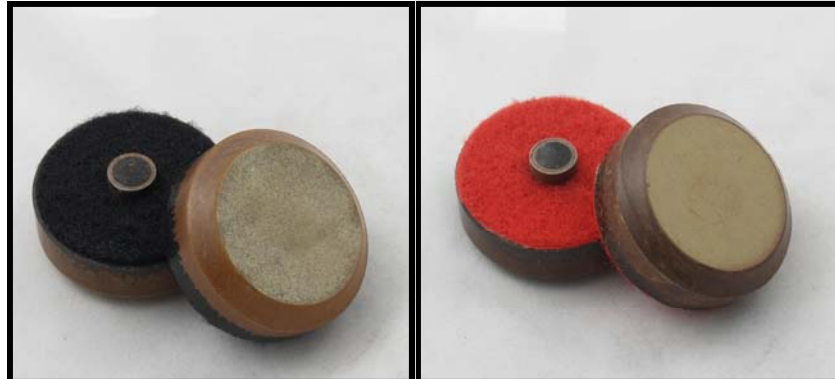


SUPER LONG LIFE RESIN HYBRIDS

TRANSFORMERS PART NUMBERS & DESCRIPTIONS		
DIA3HYTRAN50 50 GRIT TRANSFORMER HYBRID TRANSITIONAL RESIN	DIA3HYTRAN100 100 GRIT TRANSFORMER HYBRID TRANSITIONAL RESIN	DIA3HYTRAN200 200 GRIT TRANSFORMER HYBRID TRANSITIONAL RESIN
DIA3HYTRAN400 400 GRIT TRANSFORMER HYBRID TRANSITIONAL RESIN	DIA3HYTRAN800 800 GRIT TRANSFORMER HYBRID TRANSITIONAL RESIN	DIA3HYTRAN1500 1500 GRIT TRANSFORMER HYBRID TRANSITIONAL RESIN

TRANSITIONALS

- Ceramic heat reduced diamonds for soft/med concrete and overlays. Reduces steps on your process! Popular for 3-5 step processes!
- For use on 535, 580, 635, 735, 780 & 835 units



PART NUMBERS & DESCRIPTIONS	
PA-10997 #1 GRIT 2" TRANSITIONAL DIAMOND	PA-10998 #4 GRIT 2" TRANSITIONAL DIAMOND



TRANSITIONALS PART NUMBERS & DESCRIPTIONS		
PA-103050 #0 GRIT 3" TRANSITIONAL DIAMOND	PA-103100 #1 GRIT 3" TRANSITIONAL DIAMOND	PA-103400 #4 GRIT 3" TRANSITIONAL DIAMOND

7" CUPSTONES & PCD WHEELS



PART NUMBERS & DESCRIPTIONS

CG-7PCD6 7" PCD 6 SEGMENT DIAMOND CUP WHEEL	CG-7ASEG 7" PCD 6 ARROW SEGMENT DIAMOND CUP WHEEL	CG-7TSEG 7" PCD 14 T-SEGMENT DIAMOND CUP WHEEL
---	---	--

PART NUMBERS & DESCRIPTIONS



CG-712ETB 7" 12 SEGMENT DIAMOND CUP WHEEL	CG-724ETB 7" 24 SEGMENT DIAMOND CUP WHEEL
CG712ETB5/8-11 7" 12 SEGMENT DIAMOND CUP WHEEL 5/8"-11	CG-724ETB5/8-11 7" 24 SEGMENT DIAMOND CUP WHEEL 5/8"-11



PART NUMBERS & DESCRIPTIONS

CG-7BTD1820 7" SUPREME 18/20 GRIT DIAMOND CUP WHEEL	CG-7BTD5060 7" SUPREME 50/60 GRIT DIAMOND CUP WHEEL	CG-7BTD120140 7" SUPREME 120/140 GRIT DIAMOND CUP WHEEL
---	---	---

10" BLADES NINJA World's Most Productive



PART NUMBERS & DESCRIPTIONS

BG707111

10" NINJA DISC
HARD BOND BLUE

BG707112

10" NINJA DISC
MEDIUIM BOND GREEN

BG707113

10" NINJA DISC
SOFT BOND RED

BG250



BGS250



PART NUMBERS & DESCRIPTIONS

CG1010ASEG

10" 10 SEGMENT
PREMIUM ARROW PLATE

CG1010ASEGH

10" 10 SEGMENT
ARROW HARD BOND

CG1020ASEG

10" 20 SEGMENT
PREMIUM ARROW PLATE

CG1020ASEGH

10" 20 SEGMENT
ARROW HARD BOND

7" RESIN PADS

Edger Equipment both
Walkbehind &
Hand Tools



PART NUMBERS & DESCRIPTIONS

<p>DIASC9P7050 50 GRIT GREY 7" RESIN PAD</p>	<p>DIASC9P7010 100 GRIT BLACK 7" RESIN PAD</p>	<p>DIASC9P7020 200 GRIT BLUE 7" RESIN PAD</p>
---	---	--



PART NUMBERS & DESCRIPTIONS

<p>DIASC9P7040 400 GRIT RED 7" RESIN PAD</p>	<p>DIASC9P7080 800 GRIT WHITE 7" RESIN PAD</p>	<p>DIASC9P7150 1500 GRIT YELLOW 7" RESIN PAD</p>	<p>DIASC9P7300 3000 GRIT GREEN 7" RESIN PAD</p>
---	---	---	--

FLOR-GRIT

Diamond Impregnated Pad for
Maintainer and Flor-Finish Application

PART NUMBERS & DESCRIPTIONS

PA-109200	27" FLOR GRIT PAD 200 GRIT
PA-109400	27" FLOR GRIT PAD 400 GRIT
PA-10933	27" FLOR GRIT PAD 800 GRIT
PA-10934	27" FLOR GRIT PAD 1500 GRIT
PA-10935	27" FLOR GRIT PAD 3000 GRIT
PA-10990	24" FLOR GRIT PAD 800 GRIT
PA-10991	24" FLOR GRIT PAD 1500 GRIT
PA-10992	24" FLOR GRIT PAD 3000 GRIT
PA-10987	21" FLOR GRIT PAD 800 GRIT
PA-10988	21" FLOR GRIT PAD 1500 GRIT
PA-10989	21" FLOR GRIT PAD 3000 GRIT



PA-10984	19" FLOR GRIT PAD 800 GRIT
PA-10985	19" FLOR GRIT PAD 1500 GRIT
PA-10986	19" FLOR GRIT PAD 3000 GRIT
PA-10981	17" FLOR GRIT PAD 800 GRIT
PA-10982	17" FLOR GRIT PAD 1500 GRIT
PA-10983	17" FLOR GRIT PAD 3000 GRIT